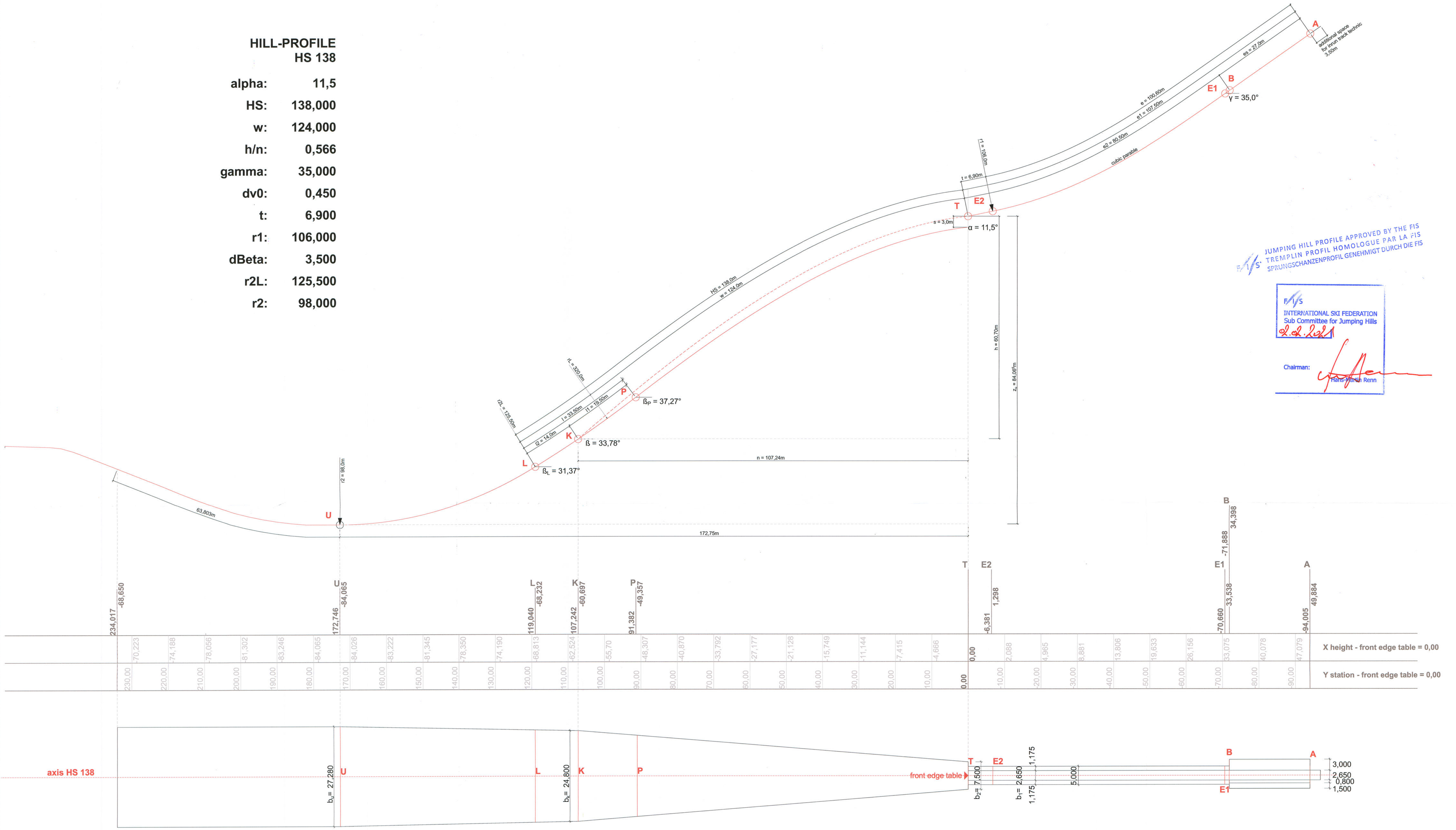


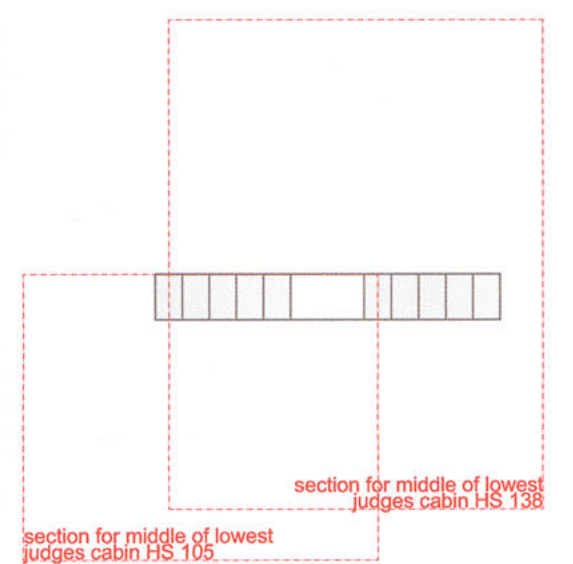
**HILL-PROFILE
HS 138**

alpha: 11,5
 HS: 138,000
 w: 124,000
 h/n: 0,566
 gamma: 35,000
 dv0: 0,450
 t: 6,900
 r1: 106,000
 dBeta: 3,500
 r2L: 125,500
 r2: 98,000



JUMPING HILL PROFILE APPROVED BY THE FIS
 TREMPLIN PROFIL HOMOLOGUE PAR LA FIS
 SPRUNGSCHANZENPROFIL GENEHMIGT DURCH DIE FIS

FIS
 INTERNATIONAL SKI FEDERATION
 Sub Committee for Jumping Hills
 Chairman: Hans-Joachim Renn



design



project : TRO Trondheim Granåsen Hopparena

content : hill profile HS 138

date: 20.01.2021
 scale: 1:500
 plan nr.: TRO_EP_004